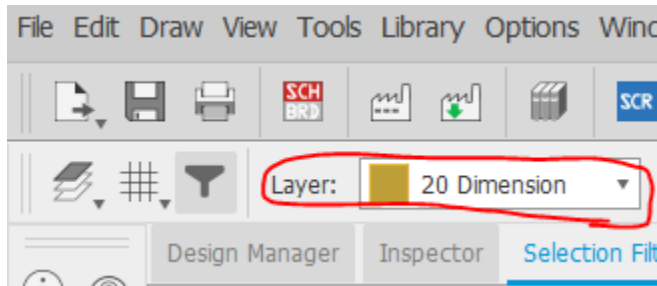


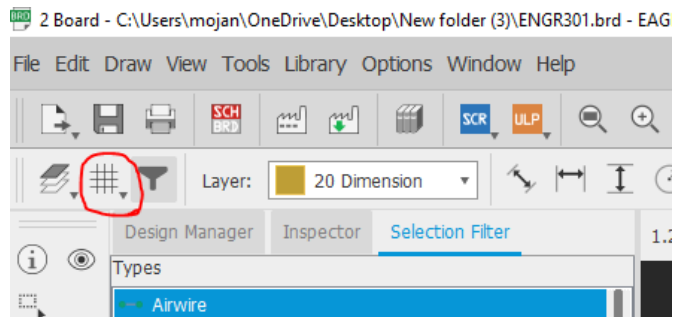
How to add mounting holes to your PCB:

It is nice to have mounting holes on the corners of our PCBs (All below steps has to be done on PCB layout page not on schematic page):

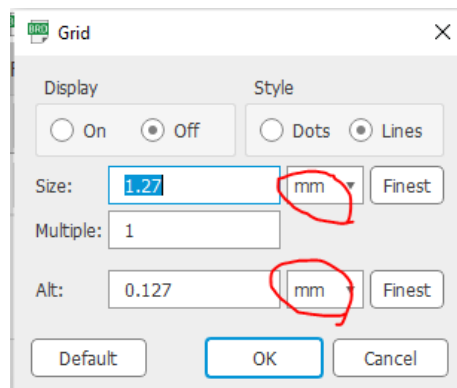
1. Click on dimension:



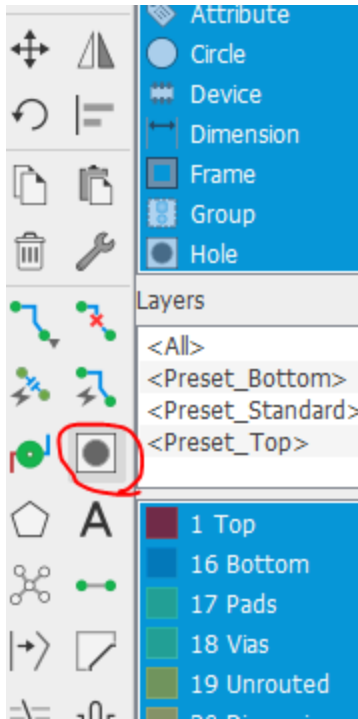
2. Click on grid:



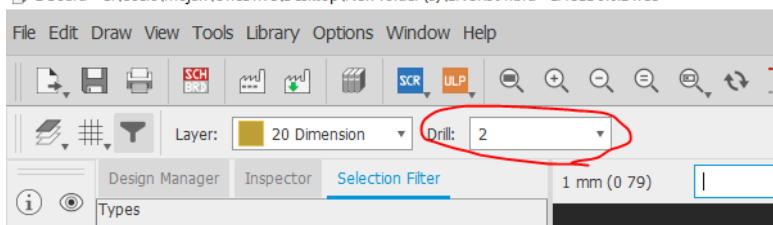
3. Change the setting to mm:



4. Click on Hole:



5. Set the hole size to 2mm:



- 6. Place the hole on 4 corners of your PCB** (if you do not have space place it at least on 2 corners). Make sure to NOT place the hole on top of any component or any trace or too close to the edges of your PCB. Find an empty space on the corners of your PCB and place the holes.

Example:

